



**European forum and oBsErvatory
for OPEN science in transport**

BE OPEN project Final Event
June 9th, 2021— 13:00-16:00 CET
"Making Open Science the new normal
for transport research"

The BE OPEN Challenges

Prof. Maria Boile,
*Director MSc in Shipping Dep. of Maritime Studies, University of Piraeus & Head of Unit, CERTH-HIT &
Affiliated Faculty, Center for Advanced Infrastructure and Transportation, Rutgers University
& BE OPEN coordinator*

BE OPEN



Duration: 30 months

Start Date: 01-01-2019

Call: H2020-MG-2018-SingleStage-INEA

*Type of Action: Coordination and Support
Action*

GA Number: 824323

Overall Budget: € 1,997,283.75

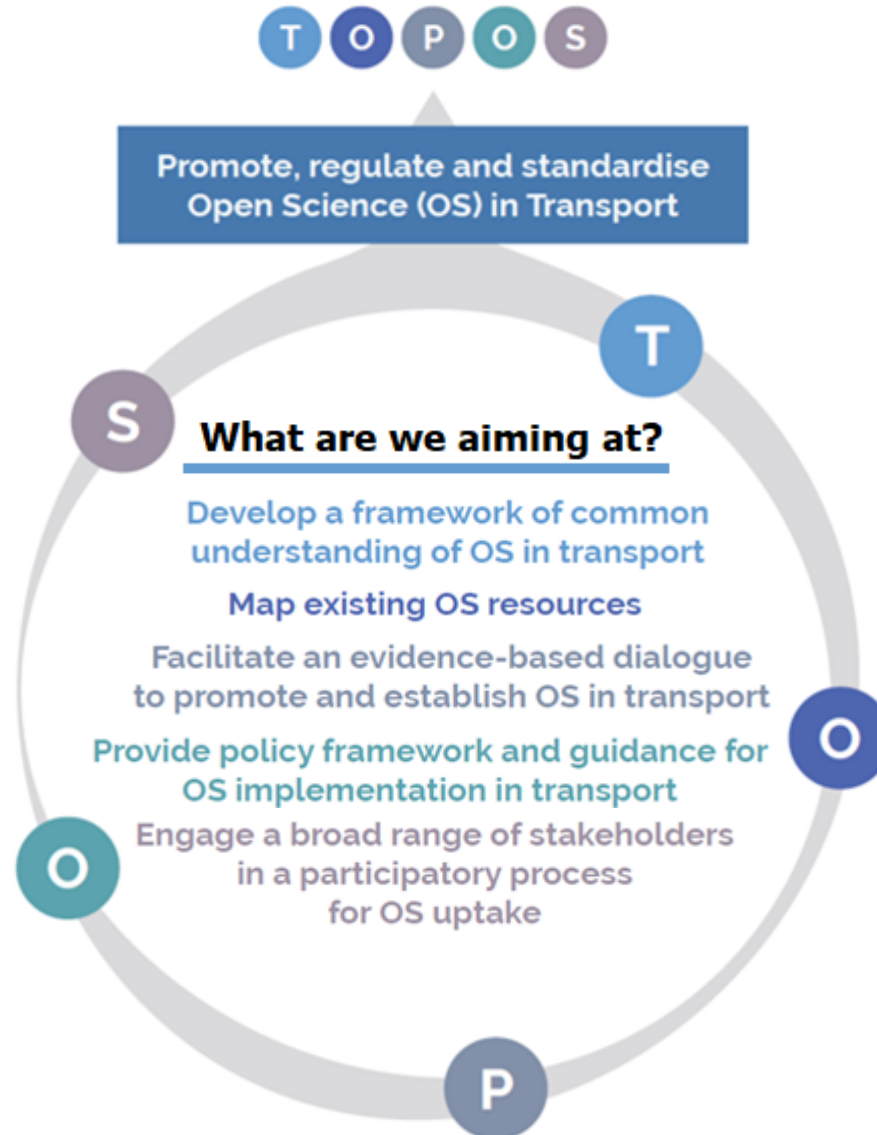
EU Contribution: € 1,997,283.75

CONSORTIUM & THIRD PARTIES



(Third Parties)

TRANSPORT FORUM/OBSERVATORY FOR PROMOTING OPEN SCIENCE (TOPOS)



CHALLENGES OF OS IN TRANSPORT RESEARCH

Resources and
organizational
Issues

Skills,
Capacities and
Capabilities

Data
Interoperability
Issues

Data Security

Data
Ownership

Legal and Ethical
Issues

Technical
Issues

CHALLENGES OF OS IN TRANSPORT RESEARCH

Researchers

Technical Challenges:

- Expertise in data security and privacy
- Expertise in data management
- Expertise in open license practices
- Expertise in database design and computer programming

Data Management:

- Data quality
- Data protection and security
- Complex nature of transport data and information

Research Institutions

- Legal restrictions (GDPR, privacy issues, IPR, etc.)
- Contractual restrictions from other partners
- Lack of skilled personnel

Public Transport Companies / Organizations

Data ownership conflicts
Data protection, privacy and ethical issues
Skilled personnel

Private Transport Companies / Organizations

Data ownership conflicts
Data protection, privacy and ethical issues
Commercial competition

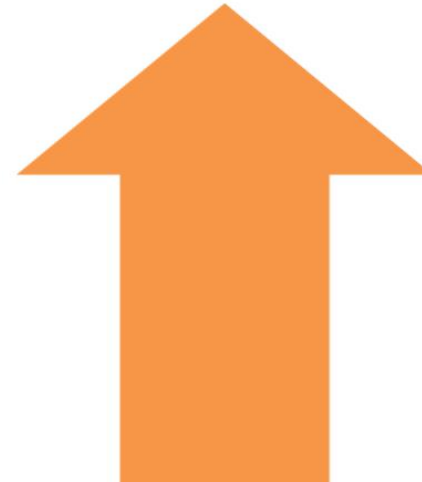
BARRIERS AND OPPORTUNITIES OF OS AT NATIONAL AND INSTITUTIONAL LEVEL



Time Consuming
Sensitive information of data
Ethical concerns (privacy, confidentiality, restrictions)
Data misuse
Missing publications
Marketization of scholarly channels
Competition between research publications
Different resource availability among institutions/organizations
Misinterpretation of the original research



Data sharing
Models and methods sharing and improvement
Exchange knowledge
Validation of data
Good practices
Collaboration of researchers
Visibility of results
Enhance reputation of researchers



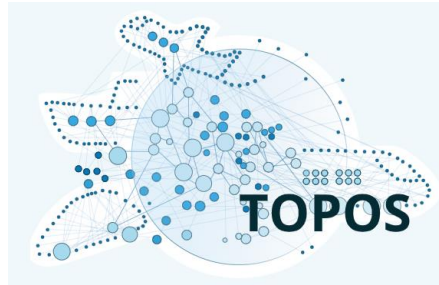
BE OPEN CHALLENGES

Development of a framework of common understanding for realizing Open Science services that will provide technical interoperability, data and information interoperability and legal interoperability

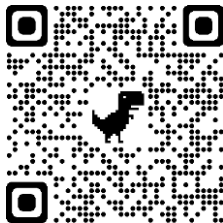
Development of the TOPOS forum and observatory for different stakeholders to support an evidence based dialogue

Provide a roadmap and concrete guidelines for operationalising Open Science services and guide key actors on how to adopt and adapt Open Science services in their research workflows

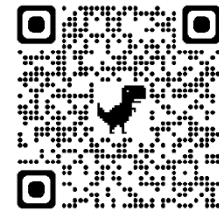
Design a Code of Conduct for adopting OS services considering the main legal and security issues for their implementation



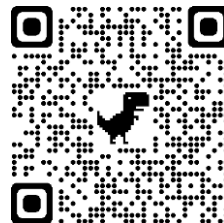
**TOPOS OBSERVATORY
FOR ORGANISATIONS**



**TOPOS OBSERVATORY
FOR INDIVIDUALS**



**TOPOS FORUM
FOR STAKEHOLDERS**



Join our community



beopen-project.eu



[@OpenScTransport](https://twitter.com/OpenScTransport)



[BE OPEN Group](#)



[Newsletter](#)



[BEOPEN community](#)

