

Open Science – a blueprint for the university in the 21st century?

Dr Paul Ayris

Pro-Vice-Provost (UCL Library Services &
UCL Office for Open Science
and Scholarship)

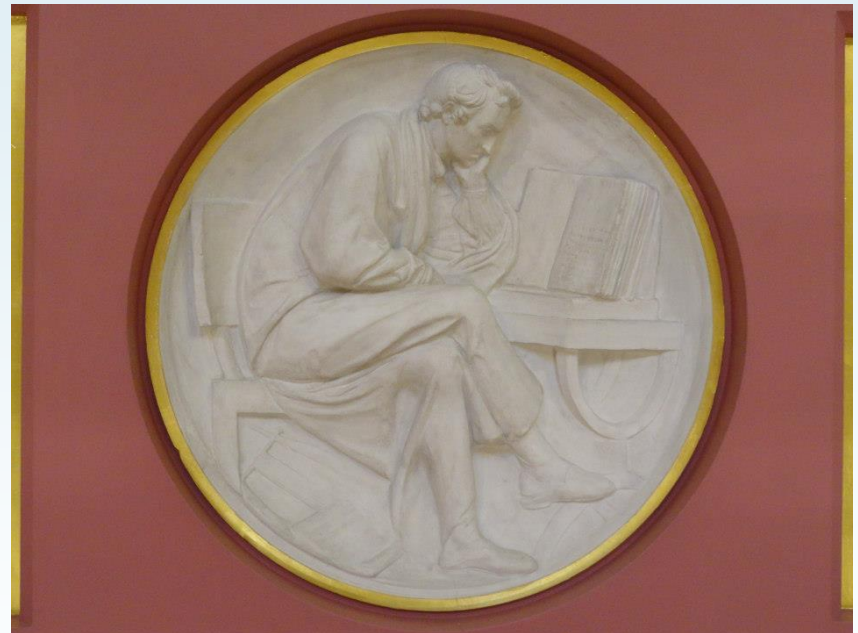
E-mail: p.ayris@ucl.ac.uk

Twitter: @ucylpay



Content

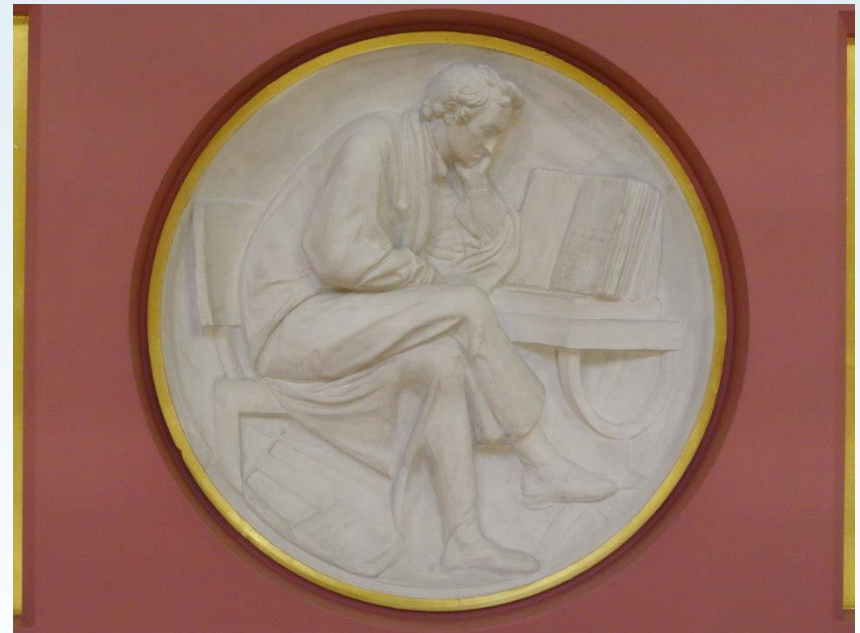
- ❑ Open Science – a view from LERU
- ❑ Future of Scholarly Publishing
- ❑ Next Steps



Plaster Relief by John Flaxman,
Flaxman Gallery, UCL

Content

- ❑ Open Science – a view from LERU
- ❑ Future of Scholarly Publishing
- ❑ Next Steps



Plaster Relief by John Flaxman,
Flaxman Gallery, UCL

European Commission: Open Science Policy Platform – 8 pillars of Open Science

Future of Scholarly Communication

EOSC (European Open Science Cloud)

FAIR Data

Education & Skills

Research Integrity

Rewards

Next Generation Metrics

Citizen Science



League of European Research Universities

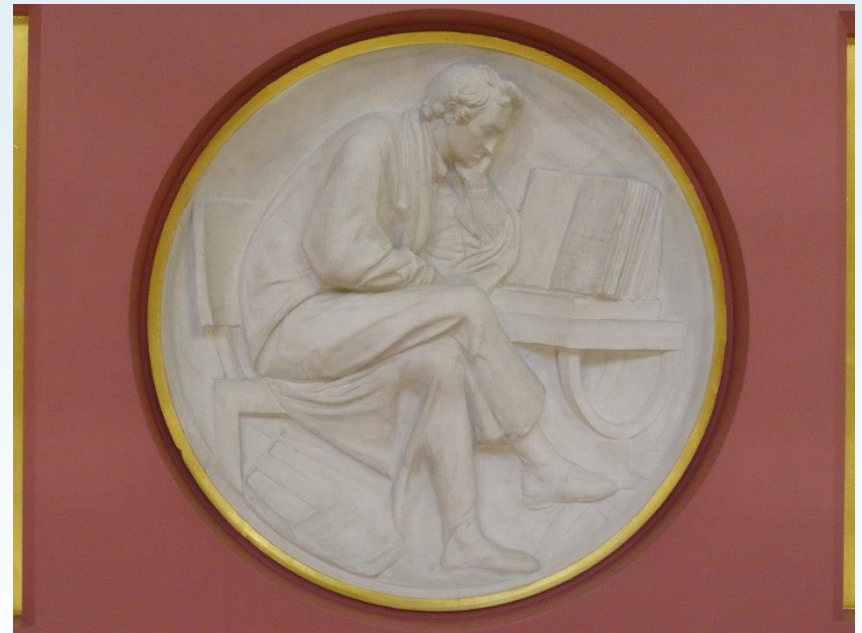
23 leading universities pushing the frontiers of innovative research

- ❑ LERU has produced an Open Science Roadmap for universities
- ❑ Launched on 12 June 2018 at <https://www.leru.org/publications/open-science-and-its-role-in-universities-a-roadmap-for-cultural-change>
- ❑ Open Science Implementation Report - November 2020



Content

- ☐ Open Science – a view from LERU
- ☒ Future of Scholarly Publishing
- ☐ Next Steps



Plaster Relief by John Flaxman,
Flaxman Gallery, UCL

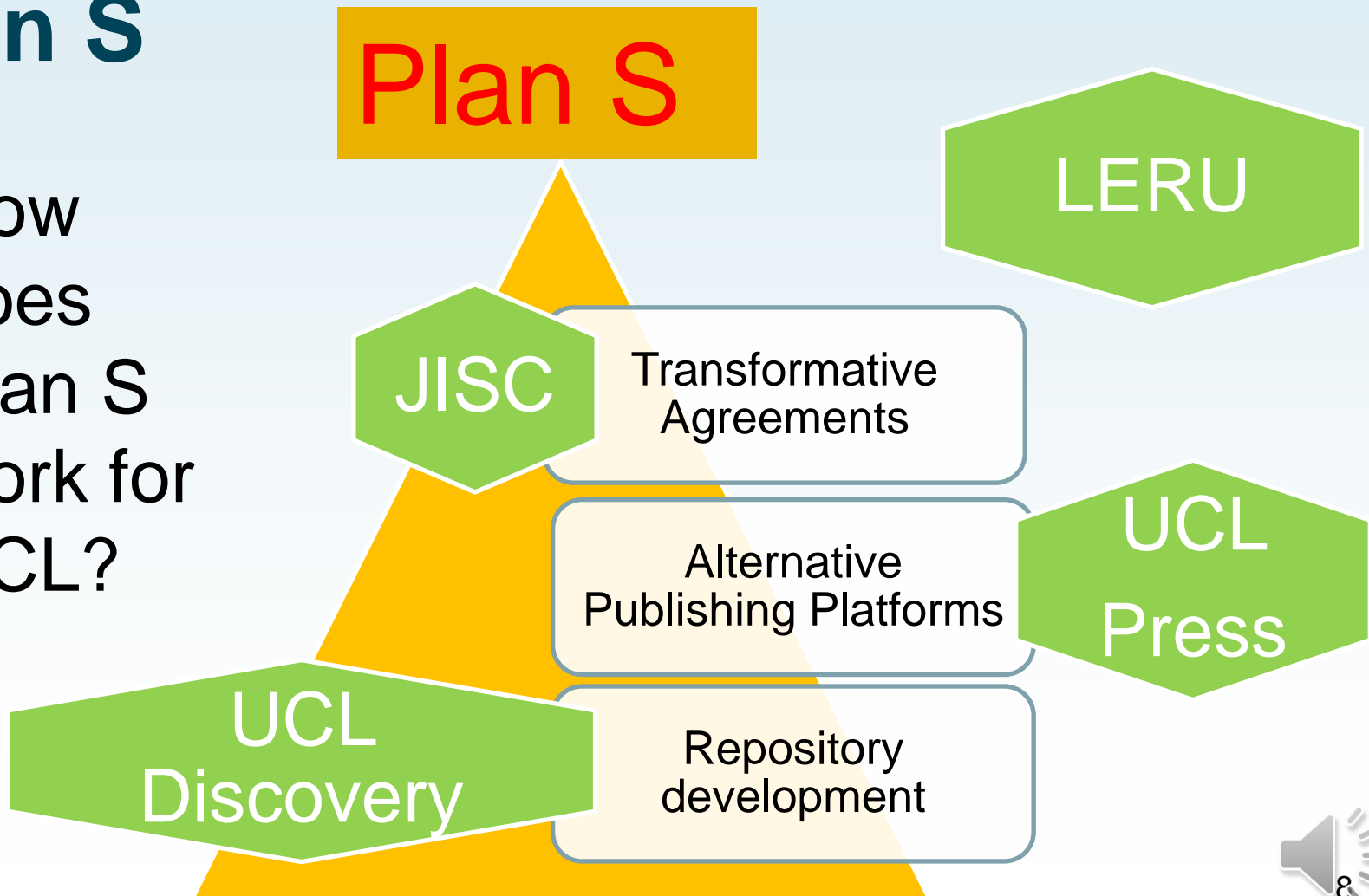
The role of the Funder

- ❑ For research, research funders have set the agenda
- ❑ Plan S from Science Europe is the latest attempt to deliver a meaningful transition to immediate Open Access
- ❑ A kick to Open Access that was badly needed



Plan S

- How does Plan S work for UCL?



Plan S

- ❑ Issues for universities
- ❑ Positives
 - ❑ Timeframes
 - ❑ The role of Green OA
 - ❑ Copyright retention
- ❑ Challenges
 - ❑ Cost – LERU universities do not want to pay more than now
 - ❑ Define a transformative agreement
 - ❑ A European solution only?



Benefits of an OA University Press

Taking publishing back into the university system - the university supports the entire research life cycle

Challenge the prevailing scholarly publishing model - issue of low dissemination

Support for OA to AHSS outputs, which receive less funding than STEM

Social impact: research available to the public and policy makers

Global impact: outputs reach regions in which research is unavailable or unaffordable

Motivation for academics: they want their research to be widely read

Added reputational value of a university press, through global dissemination, publicity, reviews

Consistent with Open Science agenda

Opportunities for integration of research and learning



Statistics

Explore download statistics for UCL Press books. For more information on how we collect and record our data, [click here](#).

Total Access

3,467,240

Print unit sales
total

20,268

Please Choose a Title or Select All

(All)

Global Reach

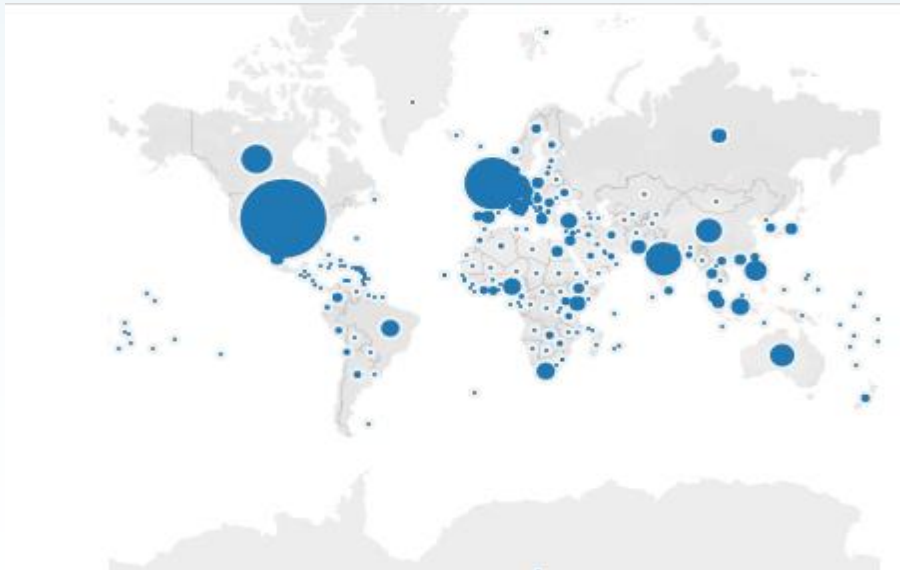
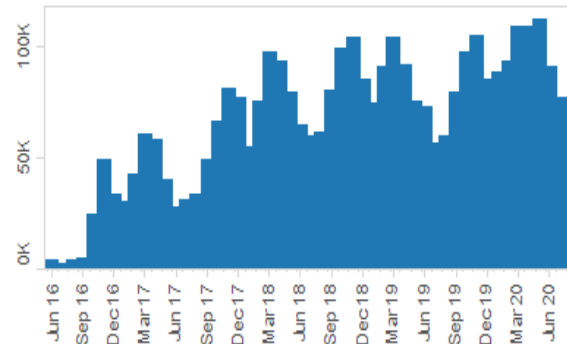
Countries and
Territories Reached

244

Published Titles

161

Monthly Access



Use & Impact

4 million+

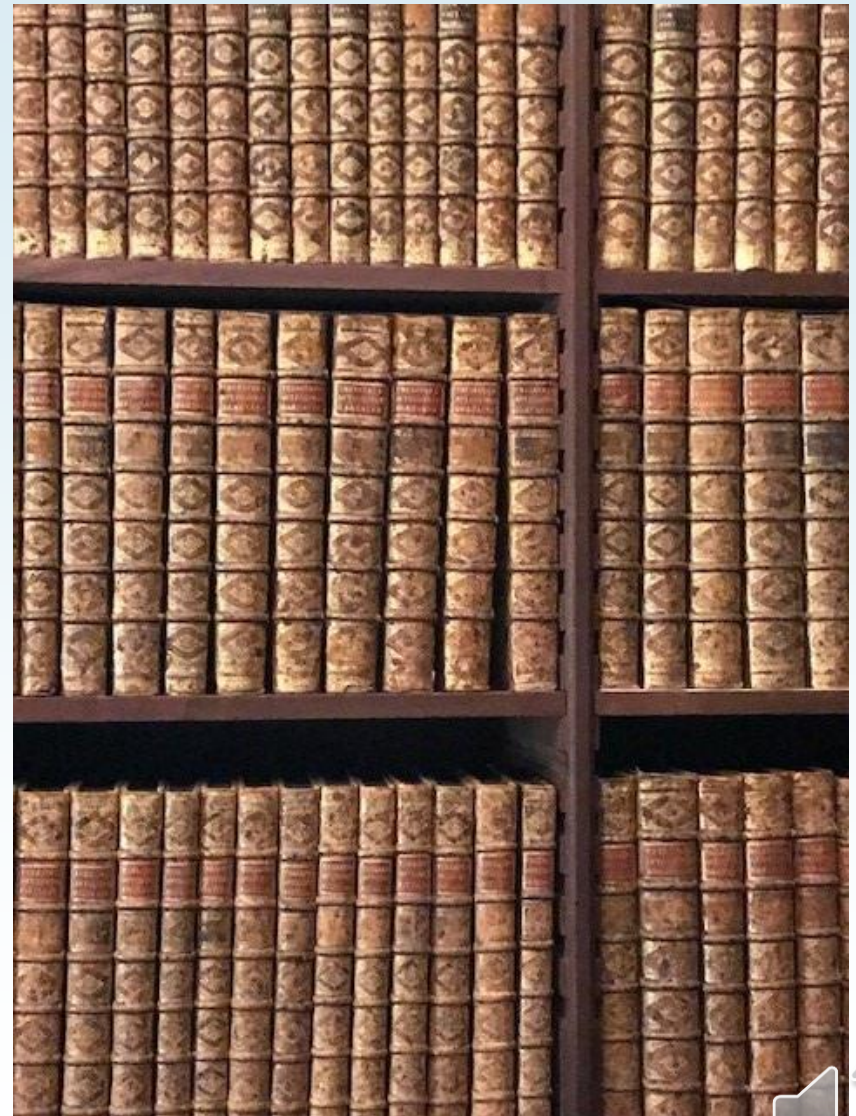


**246
countries**

UCL Press offers publishing services



- ☐ Dublin City University is the first university to buy publishing services from UCL
- ☐ All outputs to be branded as Dublin City University Press
- ☐ All enquiries welcomed
- ☐ <https://www.uclpress.co.uk/>



Our Aims for a UCL Press Megajournal



Rapid publication



Innovative open peer review



Interdisciplinary collaboration



Reduced administration

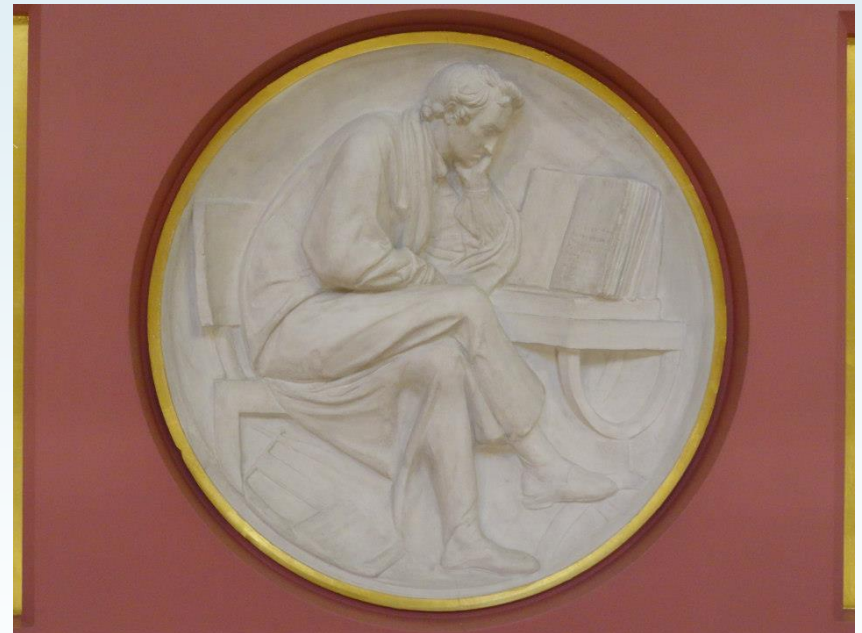


Inclusive publishing



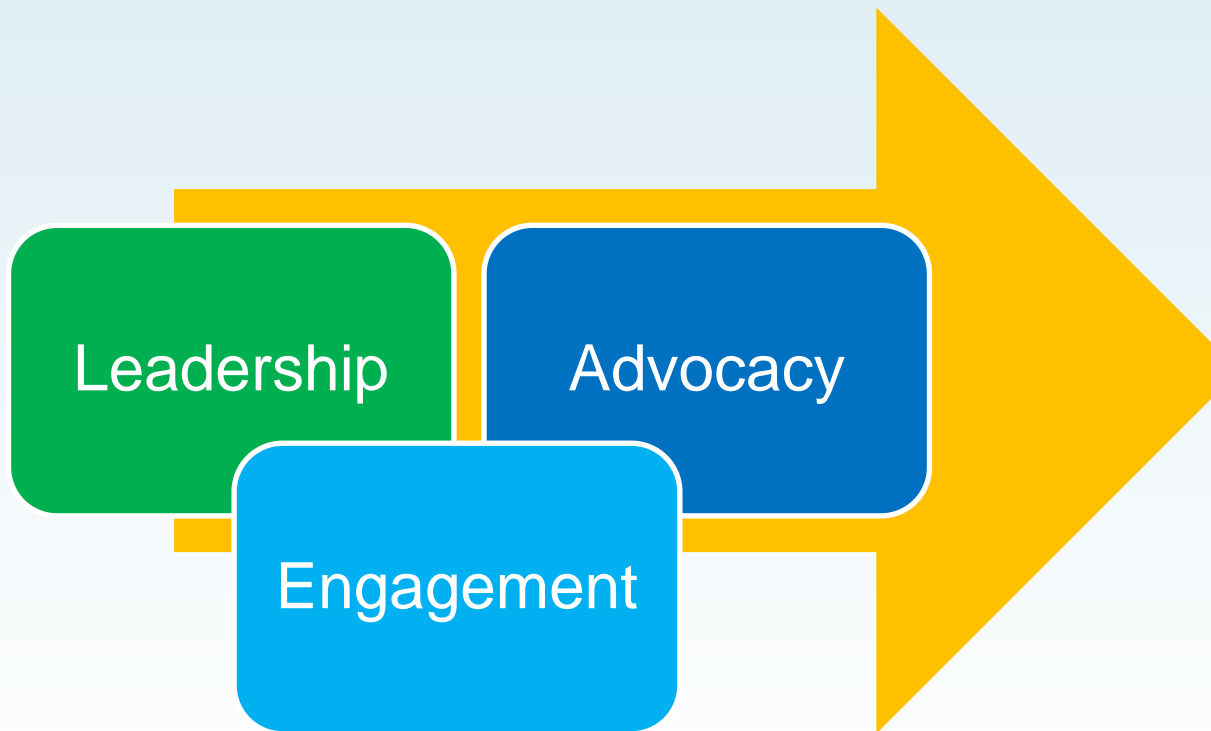
Content

- ☐ Open Science – a view from LERU
- ☐ Future of Scholarly Publishing
- ☐ Next Steps



Plaster Relief by John Flaxman,
Flaxman Gallery, UCL

UCL Open Science Office – launched October 2020



Open Science Pillar

Scholarly Publishing

EOSC

FAIR Data

Education & Skills

Research Integrity

Rewards

Next Generation Metrics

Citizen Science

Activities planned in all areas for 2020-21

Conclusion

- ☐ Open Science **is** a blueprint for the university of the 21st century
- ☐ Benefits are obvious
- ☐ Challenges are not easy to address
- ☐ Not a given that Open Science will be the default way to proceed
- ☐ Universities have to make a choice



UCL Student Centre, opened 18/2/19